

Zoom Boom by **CareLift**[®]



ZB6042

- 6,000 lb. capacity
- 42 ft. lifting height

SUPERIOR STABILITY

ZOOM BOOM Model ZB6042

DIMENSIONS

Wheelbase.....	120"	304 cm
Overall width.....	101"	256 cm
Overall height.....	94"	239 cm
Length less forks.....	233"	589 cm
Ground clearance.....	19"	48 cm
Total weight (approx.....)	29,600 lb	9,955 kg
Turn radius.....	141"	357 cm
Frame level.....	+/-11 Degrees	

SPECIFICATIONS

Engine	Cummins, 4BT4.5, turbocharged diesel, 99 horsepower @ 2500 rpm
Transmission	Powershift, 3 speed forward and 3 speed reverse Speed range - 3.7-18 mph 6-29 km/hr
Axles.....	Steerable outboard planetary
Brakes	Service - Differential mounted wet disc brakes - both axles Parking - Differential mounted S.A.H.R. wet disc
Tire	13.00 x 24 - 12 ply grader lug tubeless
Steering	2 wheel, 4 wheel, crab
Boom.....	3 section, welded construction Maximum lift height - 42' - 1280 cm Maximum forward reach - 28' - 852 cm Dual shaft type carriage Carriage rollback - 22 degrees Carriage forward tilt - 79 degrees
Forks	2" x 4" x 48" 5.7 cm x 10.2 cm x 122 cm
General	Fuel/hydraulic oil tank - 41 US gal - 155L Hydraulic pump - 30 gpm @ governed rpm 12 volt - 95 amp. alternator

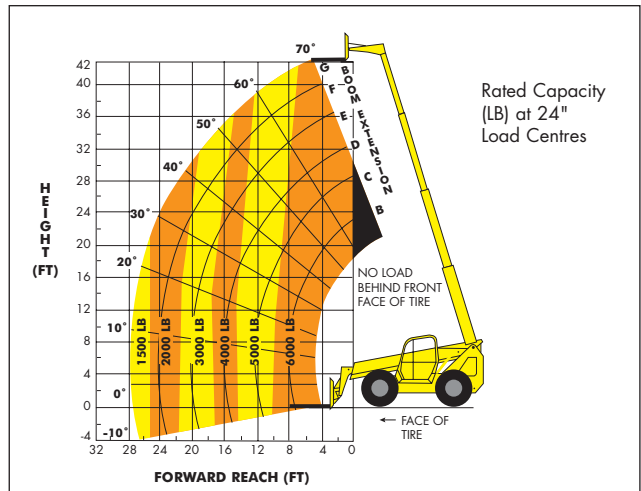
STANDARD EQUIPMENT

- Pilot-operated joystick boom & frame level controls
- Gauge instrumentation
- Hydraulic frame leveling
- Load capacity chart
- Automatic self-leveling forks
- 4 wheel drive
- Engine block heater
- Quick disconnect carriage
- ROPS/FOPS operator compartment
- Lockable fuel cap and engine compartment
- Service and park brake activated transmission disconnect
- Anti-restart keyed ignition switch with neutral start
- Tilt adjustment of console mounted joystick controls
- Hydraulic tank mounted sight level and temperature gauge
- Swing up engine doors
- Rubber isolated cab mount
- Right-hand arm rest
- Adjustable suspension seat
- Anti-freeze
- Retractable seat belt
- Electric horn
- Anti-skid floor and steps
- Reverse warning alarm
- Yellow paint with black trim
- Overcentre lock valves on all hydraulic functions
- Foot throttle
- External rear view mirrors
- Two stage air cleaner
- 4 wheel power steering
- Rear axle "stable-lock" cylinder
- Automatically activated S.A.H.R. parking brake
- Operator selectable, brake activated, automatic transmission disconnect system
- Tank mounted return filter
- Tank mounted hydraulic sump pickup filter

OPTIONAL EQUIPMENT

- Various carriage/fork sizes
- Turn signals/lights
- Working lights
- Flashing beacon
- Fork positioner
- Auxiliary hydraulics
- Enclosed operator cab
- Side tilt carriage
- Swing carriage
- Dual batteries
- Material bucket
- Winch
- 12' Jib boom
- Foam filled tires
- Fenders
- Mine code specification

CAPACITY CHART



- Machine design complies with ASME/ANSI B56.6 stability requirements for rough terrain forklifts.
- For attachments consult factory for load rating.
- Read boom angle and boom extension, then determine allowable load from chart.
- Figures shown are stacking capacity with truck level on a firm surface and with properly inflated tires.
- Do not exceed rated loads as dangerous and unstable machine conditions will result.

IMPORTANT

- All capacities rated on firm ground, with the machine steered straight and frame level.
- Always travel with boom retracted in the lowest possible position.
- Never position fork carriage behind front face of tire.

Note: Materials and specifications are subject to change without notice.



Extending ourselves for you.

CareLift Equipment Limited
5111 Fountain St. N., P.O. Box 250 Breslau, Ontario N0B 1M0
Tel: (519) 648-2282 • Toll Free: 1-800-870-0441
Fax: (519) 648-3434 • Website: www.carelift.com